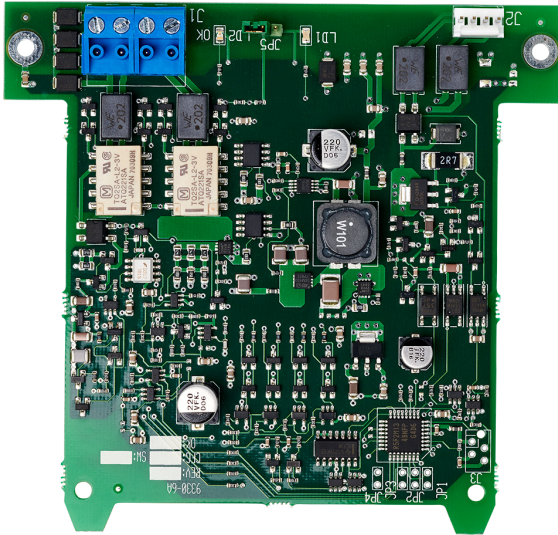


4585

COM-loop repeater



Features

- › One new 350 mA SUB-loop per expansion board
- › Mounted as an expansion board inside the External power supply 4466
- › Supports auto-addressing
- › Up to 4 expansion boards on each loop

General

- › Tested and approved according to EN54-18
- › VdS approval: G219025
- › CPR: 0786-CPR-21627

Order number

- › 4585 - COM-loop repeater

Related products

- › 4466 - External power supply
- › 4464 - 2 voltage outputs board



108 x 114 x 15 mm



24 V DC, via 4466



55 g



-5 TO +40 °C



<95%

